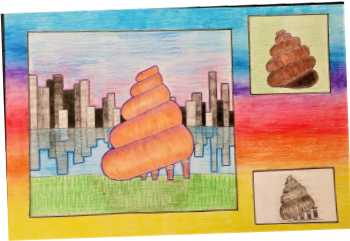


Design Thinking Connects Ideas

STEAM Science Technology Engineering Art Mathematics



RESPOND to a challenge or a need for innovation by using the IDEA Design Thinking Process. Whether it's an improved backpack, a bridge over marshy terrain, or a spoon that can function as a fork, use the IDEA process to help you generate and evaluate solutions.



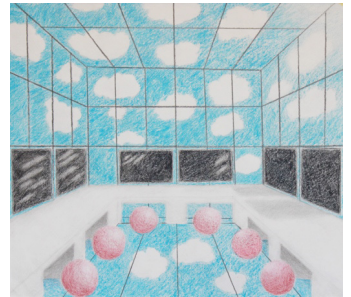
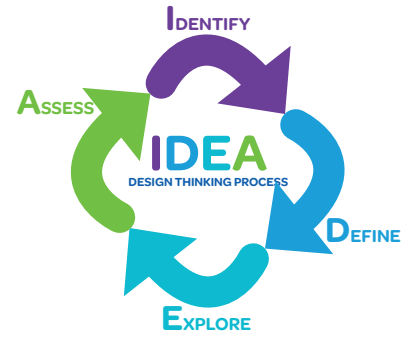
IDEA =

Identify a problem or need.

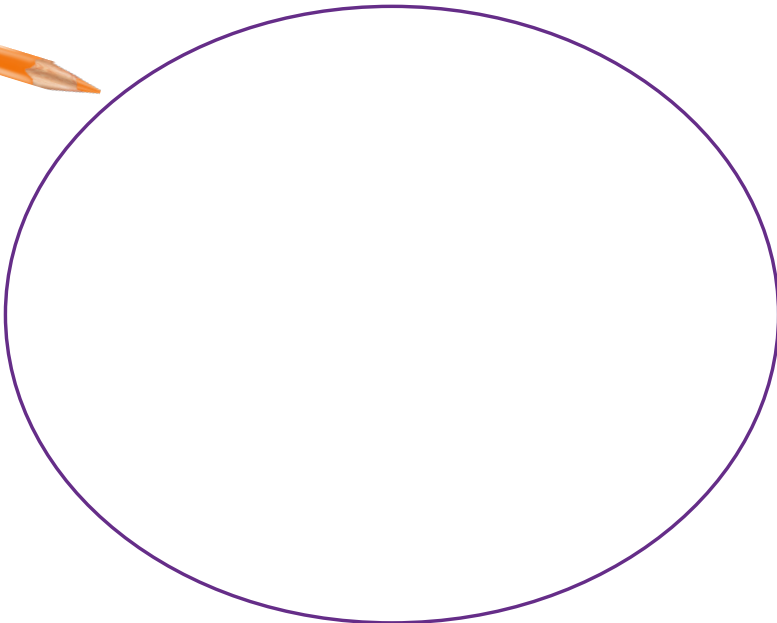
Define what matters most to those who are affected.

Explore many ideas and sketch possibilities.

Assess the solutions and implement at least one to move forward.



CREATE sketches as you explore several ways the challenge or need could be addressed. What is different about each approach? What collaboration, materials, and technology might help bring the most promising ideas to life?



PRESENT your problem and solution sketches to a group of classmates. Collaboratively assess which solutions are strongest. Build upon those ideas by asking for feedback and making revisions. Did others address similar problems or generate similar solutions that could be connected? Which ideas are most practical, unique, affordable, or fun?



Nathan C.



CONNECT the ideas that sparked the most excitement with practical insights so that the plans could move forward. Which ideas are most realistic, affordable, and relevant to the users? What unique features of other ideas could be woven into the top choices? Use the design thinking model to plan next steps including what research to conduct, how to get feedback from experts, and how to create and test a prototype.

