

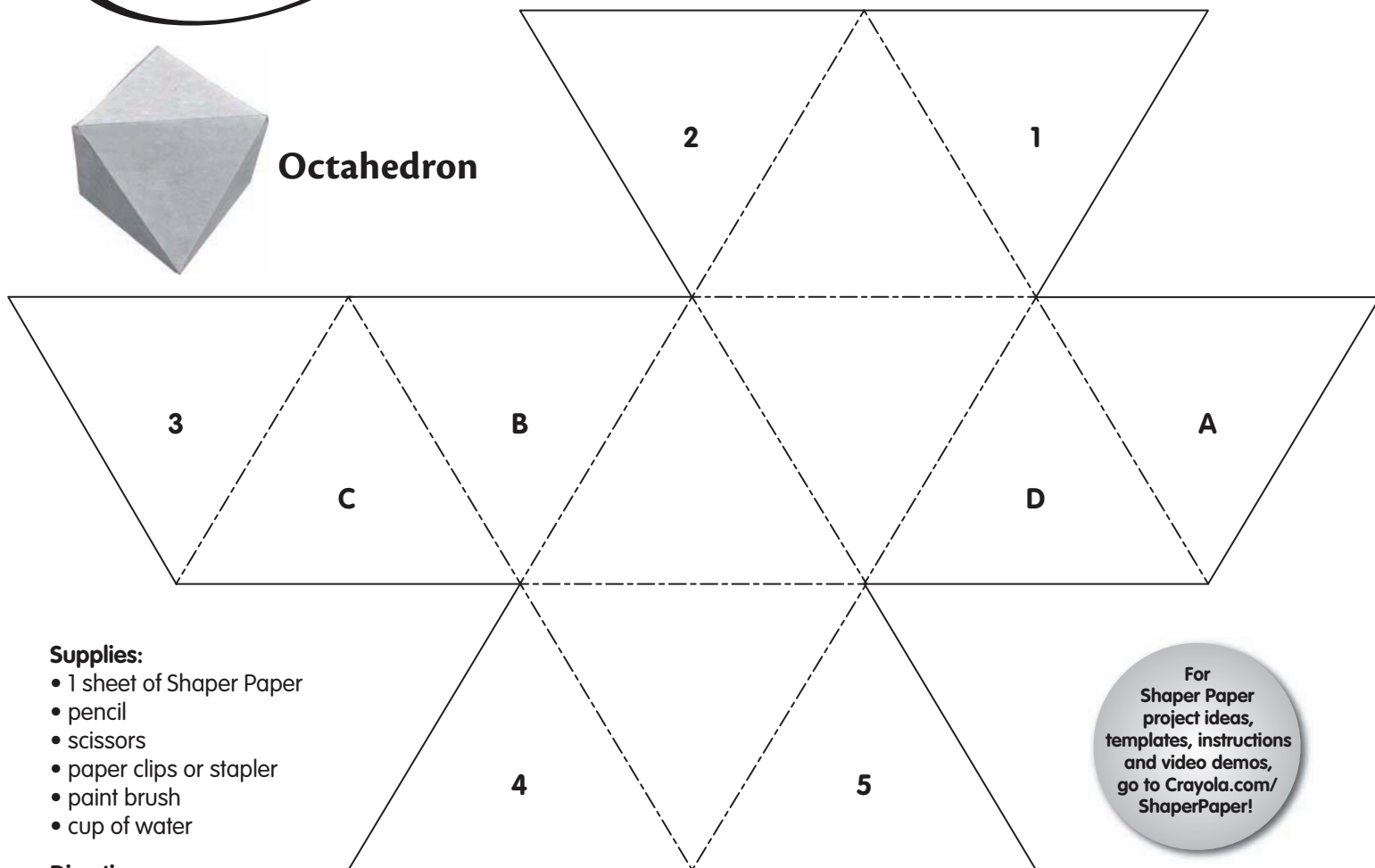


# SHAPER PAPER

Easy To Construct, Cover & Create With Only Water!



Octahedron



**Supplies:**

- 1 sheet of Shaper Paper
- pencil
- scissors
- paper clips or stapler
- paint brush
- cup of water

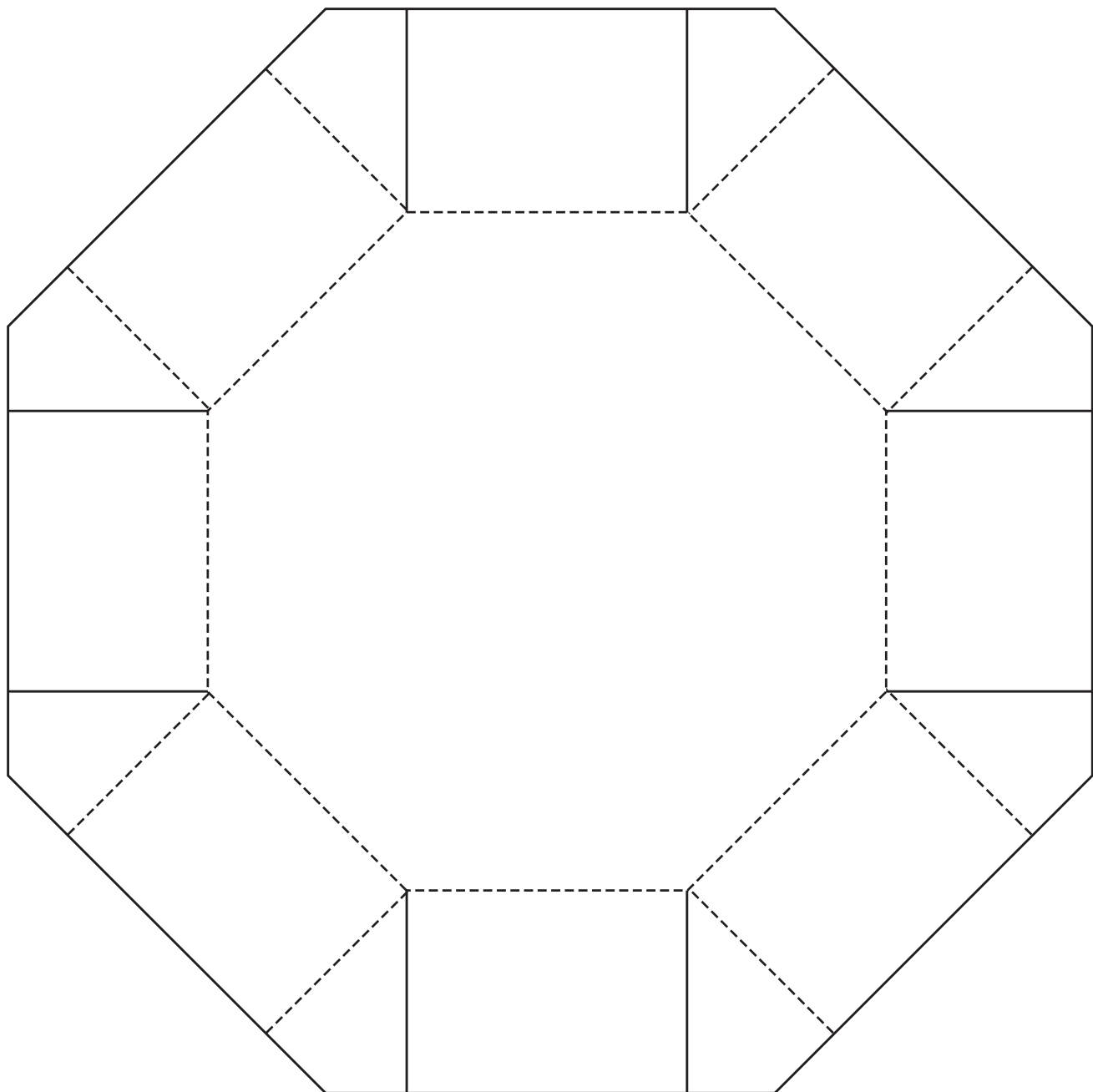
**Directions:**

1. Place a piece of Shaper Paper over the template. Clip or staple it to the template. Trace all lines with a pencil, using a ruler to keep lines straight. Cut out along outside (solid) lines.
2. Fold along all dashed lines. Practice making the octahedron before adding water and activating the adhesive.  
*Reminder: Shaper Paper requires only a small amount of moisture for construction techniques.*
3. Dip a small paint brush in water and dab off excess on a paper towel. Apply water to the entire **face** of triangle 1 and let it "set" for a few seconds. Fold and attach to the **underside** of triangle A.
4. Apply water to the entire **face** of triangle 2 and let it "set" for a few seconds. Fold and attach to the **underside** of triangle B.
5. Apply water to the entire **underside** of triangle 3 and let it "set" for a few seconds. Fold and attach to the **face** of triangle A.
6. Apply water to the entire **underside** of triangle 4 and let it "set" for a few seconds. Fold and attach to the **face** of triangle C.
7. Apply water to the entire **underside** of triangle 5 and let it "set" for a few seconds. Fold and attach to **face** of triangle D.
8. Allow completed figure to air-dry. When dry to the touch, decorate as desired.

For Shaper Paper project ideas, templates, instructions and video demos, go to [Crayola.com/ShaperPaper!](http://Crayola.com/ShaperPaper!)

### Octagon Box Directions

1. Place a piece of Shaper Paper™ over the template. Clip or staple it to the template. Trace all lines with a pencil using a ruler to keep lines straight.
2. Cut along outside solid lines.
3. To create tabs, snip inside solid lines.
4. Fold dotted lines inward. Practice making the box before adding water and activating adhesive.
5. Dip a small paint brush in water and dab off excess on a paper towel. Moisten folded tabs and attach to adjacent side.  
*Reminder: Shaper Paper™ requires only a small amount of moisture for construction techniques.*
6. Allow completed box to air-dry. When dry, decorate as desired.



### Spring Basket Directions

1. Place a piece of Shaper Paper™ over the template. Clip or staple it to the template. Trace all lines with a pencil using a ruler to keep lines straight.
2. Cut along outside solid lines.
3. Fold along all dotted lines. Practice making the basket before adding water and activating adhesive.
4. Dip a small paint brush in water and dab off excess on a paper towel. Moisten tabs and attach in order of numbers.  
*Reminder: Shaper Paper™ requires only a small amount of moisture for construction techniques.*
5. Allow completed basket to air-dry. When dry, decorate as desired.

